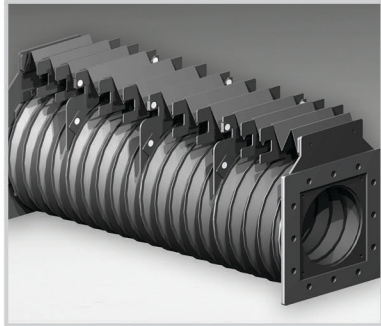


CO₂ and Fiber Laser Consumables Catalog



Replacement Parts for TRUMPF® Lasers

**ANYTIME,
ANYWHERE**

Introducing the new
rellaser.com

RICHARDSON ELECTRONICS, LTD. | 800.348.5580
RELLASER.COM | LASER@RELL.COM



Richardson Electronics is a global distributor of RF tubes (power grid tubes) and consumables used in CO₂ industrial lasers. With over 60 years of experience and 45 sales offices and stocking locations around the world, we provide the highest standard of quality and service. Our commitment to providing the best products to meet our customers' needs is second to none.

We stock critical components for laser systems and provide expert assistance in selecting replacement products and alternatives.

Richardson Electronics is a world leading supplier of CO₂ laser consumables. We have an extensive global supply network which helps us maintain a large inventory of replacement parts for CO₂ laser machines from the industry's leading manufacturers.

All of Richardson Electronics' CO₂ laser consumables are manufactured to the highest standards of quality and performance that meet, or exceed the OEM's original specifications. Our replacement parts for TRUMPF®, Bystronic® and other major manufacturer's lasers, deliver the same level of performance as OEM parts, but are a far more cost effective alternative.

Contact Richardson Electronics today for more information, or request a quote for your CO₂ laser replacement parts.

<u>Table of Contents</u>	Page
Bellows	20
Driver stages	4
Fiber Laser Consumables	8
Filters – Dust Collection, Air and Water	31
Hyco Pump	7
Lenses and cleaning supplies	18
Miscellaneous Accessories	5
Mirrors	19
Nozzles and Accessories	13
Nozzles, CoolLine & BrightLine	11
Nozzles, Precitec	12
RF Tubes	3
Sika Flow Meters	7
Water treatment kits	36



© 2019 Richardson Electronics, Ltd. All rights reserved

Richardson Electronics | www.rellaser.com | laser@rell.com | See Last Page For Local Sales Offices

All product and company names are trademarks™ or registered® trademarks of their respective holders. Use of the trademarks is solely for identification purposes, and does not imply any affiliation with or endorsement by the trademark holders..

Richardson Electronics is the world's leading supplier of replacement RF power tubes for lasers. We offer the highest quality tubes available including the original Thales made RS3021CJ, RS2048CJC and RS2088CJC. In addition, we offer the anode kits and replacement sockets for both the RS3021CJ and RS2048CJC.

The superior quality of our Thales replacement RF power tubes, our broad selection, and our competitive prices make Richardson Electronics the number one aftermarket RF tube supplier in the world. Contact Richardson Electronics today to learn more, or request a quote for the RF power tube that your laser system needs.

Did you know that pyrolytic graphite grids provide the highest reliability and the longest life?
Did you also know that the Thales RS2048CJC uses this technology? **Accept nothing less than the best for your laser, insist on Thales!**



RS2048CJC



RS3021CJ



ROEKG248K



ROEKG321G

Did you know that when you replace a tube, it is a good practice to inspect the fingers of the socket contacts, to ensure they are not bent, burned, corroded or have any type of damage that can cause arching that will result in shorter tube life?

Trumpf No.	Order No.	DESCRIPTION	Price
0120730, 1290700, 1347276, 1582540, 1800928 1800961, 1800985, 1801047, 1803428	RS3021CJ	RF End Stage Tube	Call
0932468, 1237260, 1237228, 1237398, 1296799, 1582457, 1800986, 1811787, 1812660	RS2048CJC	RF End Stage Tube	
1390594, 1438766	RS2088CJC	RF End Stage Tube	
0911332	ROEKG248K	Socket for End Stage tube type RS2048CJC	
1201187, 1548071	ROEKG321G	Socket for End Stage tube type RS3021CJ	

Richardson Electronics | www.rellaser.com | laser@rell.com | See Last Page For Local Sales Offices

All product and company names are trademarks™ or registered® trademarks of their respective holders. Use of the trademarks is solely for identification purposes, and does not imply any affiliation with or endorsement by the trademark holders..

Drive Stage Repair

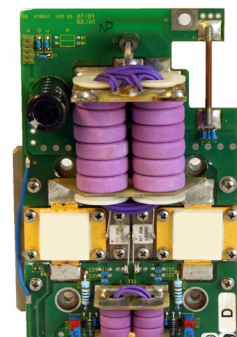


CO₂ Laser Driver Stage

As a division of Richardson Electronics, our experts at Powerlink have the knowledge, experience and test equipment to perform a 38-step process of full diagnostics, repair and 24-hour final operation test, to bring driver stages back to life at original factory specifications. We keep units in stock for swap, so you don't lose any valuable downtime -at a fraction of purchasing a new unit.

Nothing to lose and everything to gain!

Do you have a defective driver stage lying around collecting dust? Why not turn that defective driver stage into a working spare or a core credit you can use towards the purchase of a NEW RF tube or consumables of your choice? CALL US TODAY for details on how you can turn that old driver stage into consumables that you really need!



RF Amplifier Pallet

Trumpf No.	Power Output	Frequency	Order No.
0087597, 0102687	600W	13.56 Mhz	Discontinued - Alternative type = RDS1KW13-R
0954356, 0990818, 1286829, 1288251, 1544591, 1544595	650W	13.56 Mhz	RDS650W13-R
1313254, 1392849, 1726682, 1760569, 1829407	650W Class "E"	13.56 Mhz	RDS650W13E-R
0131606, 0149214, 1286827, 1288252, 1597793, 1633973	1000W	13.56 Mhz	RDS1KW13-R
1258223, 1368226, 1726681, 1746606	1000W Class "E"	13.56 Mhz	RDS1KW13E-R
0102130, 0102654	1200W	13.56 Mhz	Discontinued - Alternative type = RDS1KW13-R
0139823, 0342740, 1286828, 1288256, 1597794, 1633972	2000W	13.56 Mhz	RDS2KW13-R
1303885, 1383930, 1726678, 1746609, 1829431	2000W Class "E"	13.56 Mhz	RDS2KW13E-R
0920105, 0921405, 1293759, 1323934	1000W	27.12 Mhz	RDS1KW27-R
1391564, 1726679	1200W Class "E"	27.12 Mhz	RDS1.2KW27E-R



Powerlink is a division of Richardson Electronics, Ltd, that specializes in the repair of satellite communication equipment and industrial RF amplifiers.

Visit their web site at www.powerlink-ltd.com

Richardson Electronics | www.rellaser.com | laser@rell.com | See Last Page For Local Sales Offices

All product and company names are trademarks™ or registered® trademarks of their respective holders. Use of the trademarks is solely for identification purposes, and does not imply any affiliation with or endorsement by the trademark holders..

Do you need help in getting a tube installed? Give us a call and we'll arrange to have it installed for you!

End Stage Tube Accessories



Part No. AX2048CJ-KIT Sacrificial anode water connection kit for the RS2048CJC end stage tube. **Trumpf's part no. 1601003**

Part No. AX3021CJ-KIT Sacrificial anode water connection kit for the RS3021CJ end stage tube.



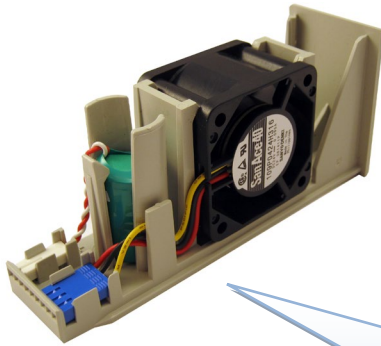
Part No. TUBE-EXTRACTOR End Stage tube extraction tool, works on the RS2048CJC and RS3021CJ. Direct replacement for **Trumpf's part no. 0925091** (includes the guide pins **Trumpf's part no. 1520715**)

Did you know that accidentally hitting the tubes grid contact(s) into the anode contact of the socket assembly can cause your tube to fail? Using a tube extraction tool minimizes this risk, by safely releasing the tube from the socket and keeping it aligned during the removal and insertion process.



Richardson Electronics | www.rellaser.com | laser@rell.com | See Last Page For Local Sales Offices

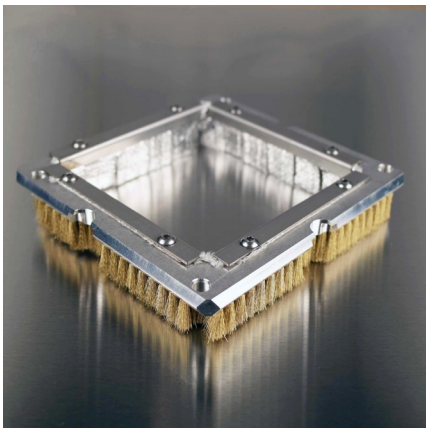
All product and company names are trademarks™ or registered® trademarks of their respective holders. Use of the trademarks is solely for identification purposes, and does not imply any affiliation with or endorsement by the trademark holders..



Part No. RST881/FAN/BATT Fan Battery Assembly –
Used in the Siemens NCU 840D (control module).
Trumpf's part no. 0146881

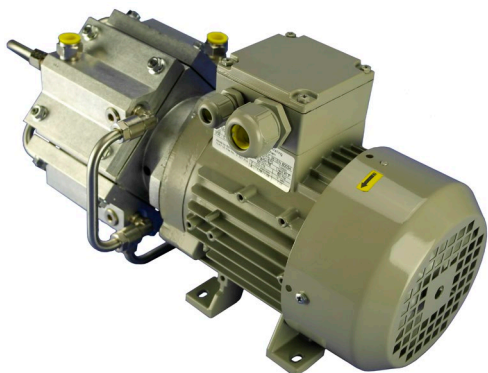
Did you know that that it is recommended that this fan battery assembly be replaced every three years? When was the last time you changed yours?

Part No. RST837/FAN/BATT Fan Battery Assembly –
Used in the Siemens NCU 7X0 or D445-1 (control modules).
Trumpf's part no. 0385837



Part No. RUT202/BRUSH Protection brush for
laser/punch combo units. - **Trumpf's part no. 0353202**

Hyco Vacuum Pumps



We are now offering replacement Hyco vacuum pumps for Trumpf® CO₂ laser systems. These are direct drop in replacements. We offer both the original hardwire version and the newer plug version.

We understand your uptime requirements, and strive to provide excellent customer service and will offer you the highest quality components that you and your TRUMPF® laser deserve – all at competitive prices.

Trumpf No.	Order No.	DESCRIPTION	Price
0149023, 0352561, 0941996, 0946052	RPT203/PUMP	Hyco Vacuum Pump (Hard Wired)	Call
0367905, 0385475, 1363752, 1363753, 2237816, 2237817	RPT752/PUMP	Hyco Vacuum Pump (With 4 Pole Receptacle Connector)	

SIKA Flow Meters



Richardson Electronics is pleased to offer the original SIKA® replacement flow meters used in Trumpf® CO₂ lasers. These are the exact same high quality flow meters as the original flow meters used in the Trumpf® laser systems. Flow meters are an essential component in making sure that the right amount of coolant is flowing to the lasers key components (such as the RF power tubes RS3021CJ & RS2048CJC), keeping them cooled properly so that they provide optimal performance and provide long life.

Over time flow meters can get clogged and or malfunction, which can lead to costly repairs. Checking the flow meters should be part of your normal preventive maintenance and replaced as required. An ounce of prevention can be worth thousands of dollars in savings in repairs!

SIKA Flow Meters

Trumpf No.	Order No.	DESCRIPTION	Price
1264721 & 1934478	VT1541KHUTTI20	Flow Control VTH15K5-41	<div>NEW</div> Call
0362183	VT25110TRUMP13	Flow Meter VTH25-180AL	
1362184	VT1540TRUMP12	Flow Meter VTH15-41AL	
1352460	VT2511KHUTTI31	Flow Meter VTH25K6-180NTSP	
1270402 & 2043439	VT1541KHUTTI22	VTH 15 K5-41, SP-T1870	
1264725	VT1541KHUTTI21	VTH 15 K5-41 NT, SP-T3261	

Richardson Electronics | www.rellaser.com | laser@rell.com | See Last Page For Local Sales Offices

All product and company names are trademarks™ or registered® trademarks of their respective holders. Use of the trademarks is solely for identification purposes, and does not imply any affiliation with or endorsement by the trademark holders..

Consumables for Trumpf® Fiber Lasers

Richardson has been providing products to the CO₂ laser for more than 25 years now and we are pleased to announce the expansion of our laser product offerings with the addition of consumable products for fiber lasers. Below are a list of the most commonly used items. We look forward to being your supplier of choice for all of your fiber laser consumable needs.

Nozzles & Nozzle Holders



Outline	Trumpf No.	Order No.	DESCRIPTION (Sold in packages of 10)
2	1324858	RNT060/08	Nozzle EAA ø 0.8 mm
2	1324860	RNT061/10	Nozzle EAA ø 1.0 mm
2	1324861	RNT062/12	Nozzle EAA ø 1.2 mm
2	1324863	RNT063/14	Nozzle EAA ø 1.4 mm
2	1324864	RNT064/17	Nozzle EAA ø 1.7 mm
2	1324865	RNT065/20	Nozzle EAA ø 2.0 mm
2	1324866	RNT066/23	Nozzle EAA ø 2.3 mm
2	1324867	RNT067/27	Nozzle EAA ø 2.7 mm
4	1373324	RNT070/08	Nozzle EAB ø 0.8 mm
4	1373325	RNT071/10	Nozzle EAB ø 1.0 mm
4	1373326	RNT072/12	Nozzle EAB ø 1.2 mm
4	1373327	RNT073/14	Nozzle EAB ø 1.4 mm
4	1373328	RNT074/17	Nozzle EAB ø 1.7 mm
4	1373329	RNT075/20	Nozzle EAB ø 2.0 mm
4	1373330	RNT076/23	Nozzle EAB ø 2.3 mm
4	1373331	RNT077/27	Nozzle EAB ø 2.7 mm
6	1349171, 1591594, 1755673	RHT112/H	Nozzle Holder (Sold individually)
Outline	Trumpf No.	Order No.	DESCRIPTION (Sold in packages of 10)
3	0124561	RNT150/08	Nozzle ECE ø 0.8 mm (0237499)
3	0124562	RNT151/10	Nozzle ECE ø 1.0 mm
3	0966809	RNT148/12	Nozzle ECE ø 1.2 mm
3	0237497	RNT152/14	Nozzle ECE ø 1.4 mm
3	0237500	RNT153/15	Nozzle ECE ø 1.5 mm
3	0237501	RNT154/17	Nozzle ECE ø 1.7 mm
3	1253211	RNT155/20	Nozzle ECE ø 2.0 mm (0237502 & 0237503)
3	0126933	RNT158/23	Nozzle ECE ø 2.3 mm
3	0942742	RNT149/27	Nozzle ECE ø 2.7 mm
7	0260432	RHT109/H	Nozzle HOLDER "Ceramic" (Sold individually)
5	0955826	RTT162/TCB	Teflon Cover DIAS III, Black (Sold individually)



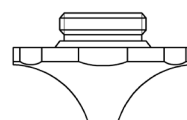
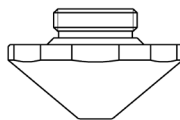
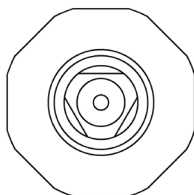
Outline drawings on following page

Richardson Electronics | www.rellaser.com | laser@rell.com | See Last Page For Local Sales Offices

All product and company names are trademarks™ or registered® trademarks of their respective holders. Use of the trademarks is solely for identification purposes, and does not imply any affiliation with or endorsement by the trademark holders..

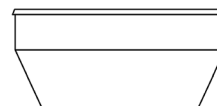
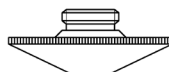
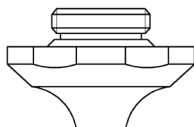
Consumables for Trumpf® Fiber Lasers

Outline	Trumpf No.	Order No.	DESCRIPTION (Sold in packages of 10)
1	2059462	RNT096/25	Nozzle EAU ø 2.5 mm
1	2060001	RNT097/30	Nozzle EAU ø 3.0 mm
1	2060004	RNT098/40	Nozzle EAU ø 4.0 mm
1	2060025	RNT099/60	Nozzle EAU ø 6.0 mm
1	2253595	RNT041/100	Nozzle EAU ø 10.0 mm



2

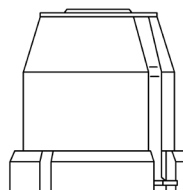
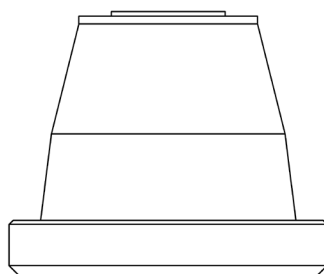
4



1

3

5



6

7

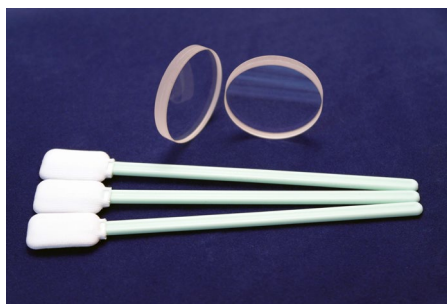
Continued.....

Richardson Electronics | www.rellaser.com | laser@rell.com | See Last Page For Local Sales Offices

All product and company names are trademarks™ or registered® trademarks of their respective holders. Use of the trademarks is solely for identification purposes, and does not imply any affiliation with or endorsement by the trademark holders..

Consumables for Trumpf® Fiber Lasers

Protective Lens Covers & Cleaning Swabs



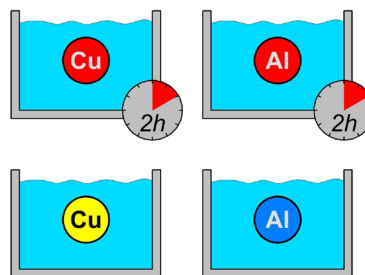
Protective Lens Covers for Fiber Laser

Trumpf No.	Order No.	DESCRIPTION	Price
0122024	RLT024/LNSTICK	Knit Polyester Cleaning Swabs (100/pack)	Call
0759720	RLT122/55D1.5T	55 Dia. x 1.5mm Thick, Fused Silica Protective Window	
0766719	RLT128/30D5T	30 Dia. x 5mm Thick, Fused Silica Protective Window	
0766719	RLT130/30D5THP	30 Dia. x 5mm Thick, Fused Silica Protective Window for +8kW Fiber Lasers	
0798142	RLT122/55D1.5T	55 Dia. x 1.5mm Thick, Fused Silica Protective Window	
1614767	RLT120/PLC-FIBR	34 Dia. x 5mm Thick, Fused Silica Window	

NEW items shown in **BOLD** type



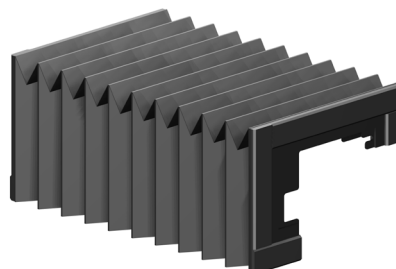
Dust Collection Filters – See page 31



Water Treatment Kits – See page 36



Water Cartridge Filters – See page 34



Rail Bellows – CALL us

Chiller Air Intake Filter Material – See page 35

Richardson Electronics | www.rellaser.com | laser@rell.com | See Last Page For Local Sales Offices

All product and company names are trademarks™ or registered® trademarks of their respective holders. Use of the trademarks is solely for identification purposes, and does not imply any affiliation with or endorsement by the trademark holders..

Trumpf® BrightLine® & CoolLine® Nozzles

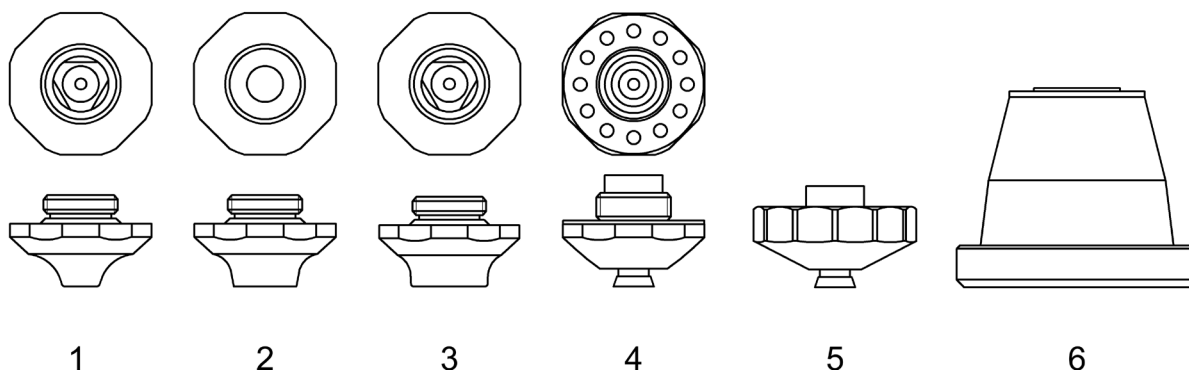


Bright Line Nozzles

Outline No.	Trumpf No.	Order No.	DESCRIPTION (Sold Individually)
1	1664569	RNT081/17	Nozzle EAN ø 1.7mm
	1664602	RNT082/20	Nozzle EAN ø 2.0mm
	1664625	RNT083/25	Nozzle EAN ø 2.5mm
1	1835747	RNT084/40	Nozzle EAK ø 4.0mm
2	1633046	RNT085/53	Nozzle EAC ø 5.3mm
3	1809091	RNT086/60	Nozzle EAQ ø 6.0mm
	1809421	RNT087/75	Nozzle EAQ ø 7.5mm
	1886199	RNT088/95	Nozzle EAQ ø 9.5mm
6	1349171, 1591594, 1755673	RHT112/H	Nozzle Holder (Sold Individually)

Cool Line Nozzles

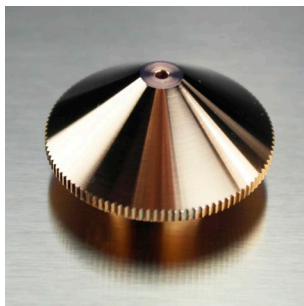
Outline No.	Trumpf No.	Order No.	DESCRIPTION (Sold Individually)
5	1774018	RNT089/14	Nozzle EFL ø 1.4mm
	1774020	RNT090/20	Nozzle EFL ø 2.0mm
	1774092	RNT091/23	Nozzle EFL ø 2.3mm
4	1879951	RNT092/17	Nozzle EGL ø 1.7mm
	1879940	RNT093/14	Nozzle EGL ø 1.4mm
	1879952	RNT094/20	Nozzle EGL ø 2.0mm
	1879953	RNT095/23	Nozzle EGL ø 2.3mm



Richardson Electronics | www.rellaser.com | laser@rell.com | See Last Page For Local Sales Offices

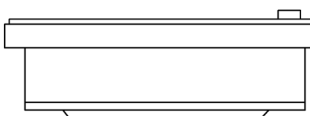
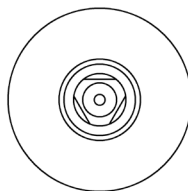
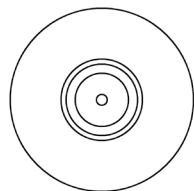
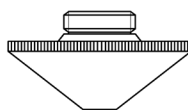
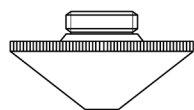
All product and company names are trademarks™ or registered® trademarks of their respective holders. Use of the trademarks is solely for identification purposes, and does not imply any affiliation with or endorsement by the trademark holders..

Precitec® Nozzles



Precitec Nozzles

Outline No.	Precitec No.	Order No.	DESCRIPTION (Sold in packages of 10)
1	P0591-571-00010	RNP130/10	Nozzle \varnothing 1,0 mm
	P0591-572-00012	RNP131/12	Nozzle \varnothing 1,2 mm
	P0591-573-00015	RNP132/15	Nozzle \varnothing 1,5 mm
	P0591-574-00018	RNP133/18	Nozzle \varnothing 1,8 mm
	P0591-575-00020	RNP134/20	Nozzle \varnothing 2,0 mm
		RNP135/22	Nozzle \varnothing 2,2 mm
	P0591-576-00025	RNP136/25	Nozzle \varnothing 2,5 mm
		RNP137/27	Nozzle \varnothing 2,7 mm
	P0591-577-00030	RNP138/30	Nozzle \varnothing 3,0 mm
Outline No.	Precitec No.	Order No.	DESCRIPTION (Sold in packages of 10)
2	P0591-002-00010	RNP300/10D	Double Nozzle \varnothing 1,0 mm
	P0591-002-00012	RNP301/12D	Double Nozzle \varnothing 1,2 mm
	P0591-002-00015	RNP302/15D	Double Nozzle \varnothing 1,5 mm
	P0591-002-00018	RNP303/18D	Double Nozzle \varnothing 1,8 mm
	P0591-002-00020	RNP304/20D	Double Nozzle \varnothing 2,0 mm
	P0591-002-00023	RNP305/23D	Double Nozzle \varnothing 2,3 mm
	P0591-002-00025	RNP306/25D	Double Nozzle \varnothing 2,5 mm
	P0591-002-00030	RNP307/30D	Double Nozzle \varnothing 3,0 mm
	P0591-002-00035	RNP308/35D	Double Nozzle \varnothing 3,5 mm
3	281330 & 6930281330	RHP100/H	Nozzle Holder (Sold individually)



1

2

3



Consumables for Trumpf® TruLaser®, Trumatic®, TCL & TC HSL Lasers

**600L, 1030, 2025, 2030, 2503E 2510, 2525, 2530, 3000(K03),
3000L, 3003E, 3020, 3030, 3040, 3050, 3060, 3530, 4002, 4003E,
4030, 4050, 5030, 6000(K01), 6000L, 6030, 6050, 7025,
7025 Fiber, 7040, 7040 Fiber, 8000**

Outline No.	Trumpf No.	Order No.	DESCRIPTION	Price
-------------	------------	-----------	-------------	-------

Standard Copper Nozzles (Sold in packages of 10)

1	0124561	RNT150/08	Nozzle ECE ø 0.8 mm (0237499)	Call
	0124562	RNT151/10	Nozzle ECE ø 1.0 mm	
	0966809	RNT148/12	Nozzle ECE ø 1.2 mm	
	0237497	RNT152/14	Nozzle ECE ø 1.4 mm With Step	
	0237497-S	RNT159/14	Nozzle ECE ø 1.4 mm With Straight Taper	
	0237500	RNT153/15	Nozzle ECE ø 1.5 mm	
	0237501	RNT154/17	Nozzle ECE ø 1.7 mm	
	1253211	RNT155/20	Nozzle ECE ø 2.0 mm (0237502 & 0237503)	
	0126933	RNT158/23	Nozzle ECE ø 2.3 mm	
		RNT156/25	Nozzle ECE ø 2.5 mm	
	0942742	RNT149/27	Nozzle ECE ø 2.7 mm	
	0237504	RNT157/30	Nozzle ECE ø 3.0 mm	

Outline drawings on following page

Hard Chromium Plated Nozzles (Sold in packages of 10)

1	0352280	RNT150/08C	Nozzle ECE ø 0.8 mm Hard Chromium Plated	Call
	0352281	RNT151/10C	Nozzle ECE ø 1.0 mm Hard Chromium Plated	
	0352282	RNT148/12C	Nozzle ECE ø 1.2 mm Hard Chromium Plated	
	0352283	RNT152/14C	Nozzle ECE ø 1.4 mm Hard Chromium Plated	
	0352284	RNT154/17C	Nozzle ECE ø 1.7 mm Hard Chromium Plated	
	1253212	RNT155/20C	Nozzle ECE ø 2.0 mm Hard Chromium Plated	
	0352285	RNT158/23C	Nozzle ECE ø 2.3 mm Hard Chromium Plated	
	0352286	RNT149/27C	Nozzle ECE ø 2.7 mm Hard Chromium Plated	

Outline drawings on following page

Long Copper Nozzles (Sold in packages of 10) (Chromium nozzles available upon request)

2	1277773	RNT130/08	Nozzle ø 0.8 mm	Call
	1277771	RNT131/10	Nozzle ø 1.0 mm	
	1277774	RNT132/12	Nozzle ø 1.2 mm	
	1277776	RNT133/14	Nozzle ø 1.4 mm	
	1277779	RNT134/17	Nozzle ø 1.7 mm	
	1277780	RNT135/20	Nozzle ø 2.0 mm	
	1277781	RNT136/23	Nozzle ø 2.3 mm	
	1277782	RNT137/27	Nozzle ø 2.7 mm	

Outline drawings on following page



Richardson Electronics | www.rellaser.com | laser@rell.com | See Last Page For Local Sales Offices

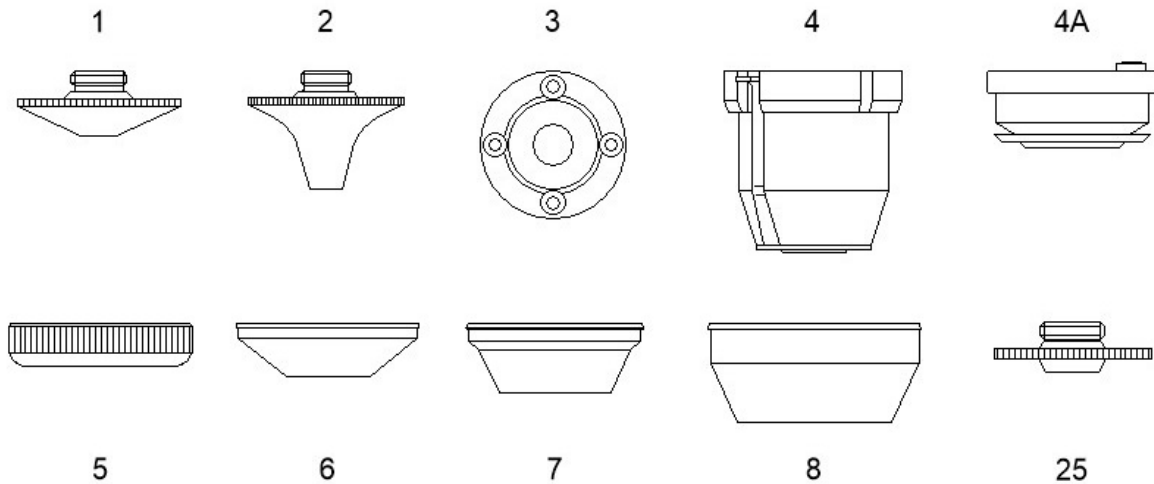
All product and company names are trademarks™ or registered® trademarks of their respective holders. Use of the trademarks is solely for identification purposes, and does not imply any affiliation with or endorsement by the trademark holders..



Consumables for Trumpf® TruLaser®, Trumatic®, TCL & TC HSL Lasers
600L, 1030, 2025, 2030, 2503E 2510, 2525, 2530, 3000(K03),
3000L, 3003E, 3020, 3030, 3040, 3050, 3060, 3530, 4002, 4003E,
4030, 4050, 5030, 6000(K01), 6000L, 6030, 6050, 7025,
7025 Fiber, 7040, 7040 Fiber, 8000



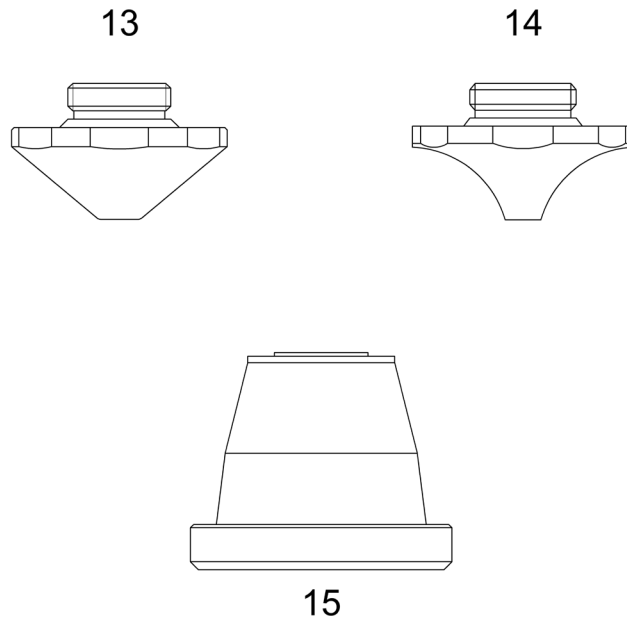
Outline No.	Trumpf No.	Order No.	DESCRIPTION	Price
3	0234485	RMT163/BAB	Break Away Bar	Call
4	0260432	RHT109/H	Nozzle HOLDER "Ceramic"	
4A	0258809	RHT111/H	Nozzle HOLDER "Ceramic" (0243839 & 0247894)	
5	0216066	RMT165/NUT	Locking Nut	
6	0225286	RTT160/TC	Teflon Cover, White (Lasermatic)	
7	0254496	RTT161/TC	Teflon Cover, White	
8	0256153	RTT162/TC	Teflon Cover DIAS III, White	
8	0955826	RTT162/TCB	Teflon Cover DIAS III, Black	
25	-	RMT139/NOZZLE-ADAPT	Adapter for Precitec KTB2 Heads to M8 thread, allowing the use of the nozzles listed on the previous page.	





Consumables for Trumpf® TruLaser® TruMatic® Lasers
1030 Fiber, 3030 Fiber, 3030(L20), 3040 Fiber, 3040(L32),
5030(L16), 5030(L52), 5030 Fiber, 5040(L18), 5040(L53),
5040 Fiber, 5060(L19), 5060(L54), 6000(K05), 7000(K02),
7040, & 8000

Outline No.	Trumpf No.	Order No.	DESCRIPTION (Sold in packages of 10)	Price
13	1324858	RNT060/08	Nozzle EAA ø 0.8 mm	Call
	1324860	RNT061/10	Nozzle EAA ø 1.0 mm	
	1324861	RNT062/12	Nozzle EAA ø 1.2 mm	
	1324863	RNT063/14	Nozzle EAA ø 1.4 mm	
	1324864	RNT064/17	Nozzle EAA ø 1.7 mm	
	1324865	RNT065/20	Nozzle EAA ø 2.0 mm	
	1324866	RNT066/23	Nozzle EAA ø 2.3 mm	
	1324867	RNT067/27	Nozzle EAA ø 2.7 mm	
14	1373324	RNT070/08	Nozzle EAB ø 0.8 mm	
	1373325	RNT071/10	Nozzle EAB ø 1.0 mm	
	1373326	RNT072/12	Nozzle EAB ø 1.2 mm	
	1373327	RNT073/14	Nozzle EAB ø 1.4 mm	
	1373328	RNT074/17	Nozzle EAB ø 1.7 mm	
	1373329	RNT075/20	Nozzle EAB ø 2.0 mm	
	1373330	RNT076/23	Nozzle EAB ø 2.3 mm	
	1373331	RNT077/27	Nozzle EAB ø 2.7 mm	
15	1349171, 15911594, 1755673	RHT112/H	Nozzle Holder M12 Thread (Sold individually)	





**Consumables for Trumpf® TruLaser® Tube,
Tubematic® & Tubematic® RC Lasers TCL105,
3000, 5000(T01), 5000(T05) & 7000**

Outline No.	Trumpf No.	Order No.	DESCRIPTION	Price
16	913965	RMT007/NUT	Locking Nut	Call

Standard Copper Nozzles (Sold in packages of 10)			(Chromium nozzles available upon request)	
17	0212334	RNT010/10	Nozzle EBD ø 1.0 mm	Call
		RNT025/10	Nozzle ø 1.0 mm (Designed for high pressure cutting)	
	1479581	RNT037/12	Nozzle EBD ø 1.2 mm	
	0216199	RNT011/14	Nozzle EBD ø 1.4 mm	
	0225213	RNT012/17	Nozzle EBD ø 1.7 mm	
	1487036	RNT034/20	Nozzle EBF ø 2.0 mm	
20	0126156	RNT028/23	Nozzle EBD ø 2.3 mm	
	0237364	RNT019/10	Shower Nozzle ø 1.0 mm	
18	0226939	RNT013/10	Nozzle ø 1.0 mm	
		RNT026/10	Nozzle ø 1.0 mm	
	0226940	RNT014/14	Nozzle ø 1.4 mm	
	0227144	RNT015/17	Nozzle ø 1.7 mm	
19		RNT029/23	Nozzle ø 2.3 mm	
		RNT016/10	Nozzle ø 1.0 mm	
		RNT017/14	Nozzle ø 1.4 mm	
		RNT018/17	Nozzle ø 1.7 mm	
21		RNT030/23	Nozzle ø 2.3 mm	
	0135320	RNT225/10	Nozzle ø 1.0 mm Rough Edged	
		RNT226/12	Nozzle ø 1.2 mm Rough Edged	
	0135318	RNT220/14	Nozzle ø 1.4 mm Rough Edged	
	0126157	RNT221/17	Nozzle ø 1.7 mm Rough Edged	

Outline drawings on following page



**ANYTIME,
ANYWHERE**

Introducing the new **rellaser.com**

ONLINE CHAT NOW
AVAILABLE >

Chat with us

Richardson Electronics | www.rellaser.com | laser@rell.com | See Last Page For Local Sales Offices

All product and company names are trademarks™ or registered® trademarks of their respective holders. Use of the trademarks is solely for identification purposes, and does not imply any affiliation with or endorsement by the trademark holders..



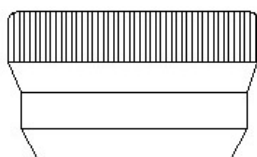
**Consumables for Trumpf® TruLaser® Tube,
Tubematic® & Tubematic® RC Lasers TCL105,
3000, 5000(T01), 5000(T05) & 7000**



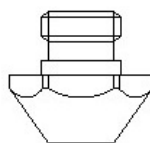
Outline No.	Trumpf No.	Order No.	DESCRIPTION	Price
16	0913965	RMT007/NUT	Locking Nut	Call
23	0936678	RHT110/H	Nozzle Holder "Ceramic" (Replacement for original design)	
23A	0936678	RHT115/H	Nozzle Holder "Ceramic" (Half metal & half ceramic)	
-	0092405	RHT113/H	Nozzle Holder for Precitec cutting heads only.	

Standard Copper Nozzles (Sold in packages of 10)			(Chromium nozzles available upon request)	
22	0958206	RNT006/025	"Teach" Nozzle ø 0.25 mm	Call
	0913799	RNT020/08	Nozzle ø 0.8 mm	
	0913800	RNT021/10	Nozzle ø 1.0 mm	
	0913801	RNT022/14	Nozzle ø 1.4 mm	
	0937988	RNT023/17	Nozzle ø 1.7 mm	
	0937989	RNT024/23	Nozzle ø 2.3 mm	

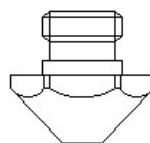
16



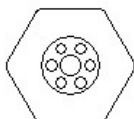
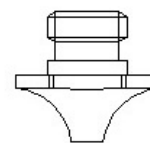
17



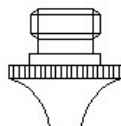
18



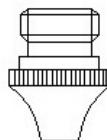
19



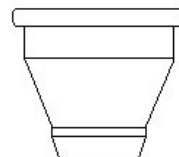
20



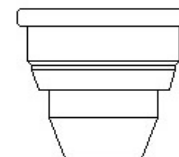
21



22



23



23A

Optics

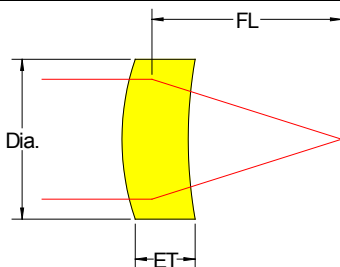


Richardson Electronics lenses and mirrors are manufactured using the highest quality materials and tightest process controls available in the industry. Every optic undergoes thorough quality controls to ensure you will get the best performance in your laser. Our standard lenses meet or exceed OEM specifications. Our low absorption lenses are the best choice for laser powers of 4 KW and up.

Our optics can help you reduce the total cost of operation of your laser.

Lenses for CO₂ Lasers

Trumpf No.	Order No.	DESCRIPTION	Price
088114	RLT100/50S	5" F/L, 1.5" Dia., 0.291 ET, AR ≤ 0.20%	Call
088114	RLT200/50LA	5" F/L, 1.5" Dia., 0.291 ET, AR ≤ 0.15% (Low Absorption)	
097517	RLT101/75S	7.5" F/L, 1.5" Dia., 0.291 ET, AR ≤ 0.20%	
097517	RLT201/75LA	7.5" F/L, 1.5" Dia., 0.291 ET, AR ≤ 0.15% (Low Absorption)	
0141972	RLT103/90S	9" F/L, 1.5" Dia., 0.291 ET, AR ≤ 0.20%	
0240568	RLT568/TOPOL80	Topol Lens Cleaner (80ml Bottle)	
0346104	RLT102/375S	3.75" F/L, 1.5" Dia., 0.291 ET, AR ≤ 0.20%	
0350163	RLT104/100S	10" F/L, 1.5" Dia., 0.291 ET, AR ≤ 0.20%	
0380117	RLT106/50S	130mm F/L, D40, 7.5mm ET, Cut Lens (Without RFID Chip)	
1330414	RLT109/45S	115mm F/L, D50, 8.9mm ET, Cut Lens (Without RFID Chip)	
1330448	RLT108/70S	175mm F/L, D50, 8.9mm ET, Cut Lens (Without RFID Chip)	
1383925	RLT125/60S	155mm F/L, D40, 7.5mm ET, AR/AR	
1383925	RLT205/60LA	155mm F/L, D40, 7.5mm ET, AR/AR (Low Absorption)	
1383926	RLT126/90S	240mm F/L, D40, 7.5mm ET, AR/AR	
1383926	RLT206/90LA	240mm F/L, D40, 7.5mm ET, AR/AR (Low Absorption)	
1525872	RLT112/70S	170mm F/L, D50, 8.9mm ET, Cut Lens (Without RFID Chip)	
1687226	RLT226/LRG PAPER	Large Lens Cleaning Paper - 50 Pack - Sheet size 4 x 7.75" (102 x 197mm)	
086452, 13082010	EK1546027T	Lens Cleaning Paper - 50 Pack - Sheet size 2.75 x 4.75" (70 x 121mm)	
	EK1463728T	Lens Cleaning Solution - 16 oz.	
	EZ-TEST	Used to test lenses for stress that can lead to failure.	



Protective Lens Covers for Fiber Laser

Trumpf No.	Order No.	DESCRIPTION	Price
0122024	RLT024/LNSTICK	Knit Polyester Cleaning Swabs (100/pack)	Call
0759720	RLT122/55D1.5T	55 Dia. x 1.5mm Thick, Fused Silica Protective Window	
0766719	RLT128/30D5T	30 Dia. x 5mm Thick, Fused Silica Protective Window	
0766719	RLT130/30D5THP	30 Dia. x 5mm Thick, Fused Silica Protective Window for +8kW Fiber Lasers	
0798142	RLT122/55D1.5T	55 Dia. x 1.5mm Thick, Fused Silica Protective Window	
1614767	RLT120/PLC-FIBR	34 Dia. x 5mm Thick, Fused Silica Window	

NEW items shown in **BOLD** type

Richardson Electronics | www.rellaser.com | laser@rell.com | See Last Page For Local Sales Offices

All product and company names are trademarks™ or registered® trademarks of their respective holders. Use of the trademarks is solely for identification purposes, and does not imply any affiliation with or endorsement by the trademark holders..

Optics

Mirrors

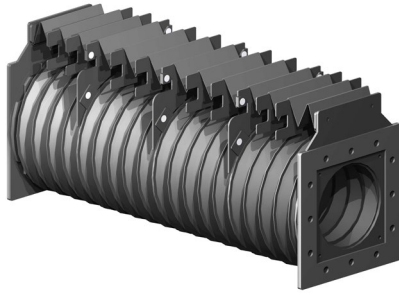
Trumpf No.	Order No.	DESCRIPTION	Price
0129880	RRT103/90PS	Si 90 Phase Shift 68mm x 20mm	Call
0129881	RRT102/0PS	Si 0 Phase Shift 68mm x 20mm	
0365640	RRT114/90PS	Cu 90 Phase Shift 68mm x 20.32mm	
0920689	RRT104/CUWC	Cu W/C Mirror 68mm x 34mm	
0977219	RRT219/U	U Mirror set, includes seven MMR mirrors, one PLM mirror and mounting o-rings	
1331867	RRT867/PLM	Polarize Lock Mirror, includes mounting o-rings	
1492304	RRT304/MMR	MMR Mirror includes mounting o-rings	
	MIRR-POL/390050	Mirror Polishing Compound	



Richardson Electronics | www.rellaser.com | laser@rell.com | See Last Page For Local Sales Offices

All product and company names are trademarks™ or registered® trademarks of their respective holders. Use of the trademarks is solely for identification purposes, and does not imply any affiliation with or endorsement by the trademark holders..

Bellows

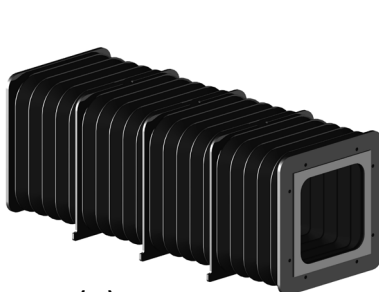


Richardson Electronics is a worldwide distributor of laser bellows for machines from most major manufacturers.

We offer laser bellows made specifically for your laser machine. Designed and manufactured in Europe, our laser bellows are made with heat resistant, flame retardant materials and are able to withstand high operating temperatures while providing years of service.

In addition, tight fitting laser bellows keep unwanted particles out of the laser beam and protect machine rails, racks and bearings, to keep your laser machine running smoothly.

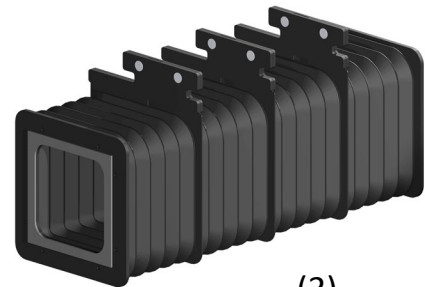
L1005 (3 Meter Bed)				
Outline No.	Trumpf No.	Order No.	DESCRIPTION	Price
1	0139850	RBT181/10BX3M	X Axis Beam Bellow (Left)	Call
1	0139851	RBT180/10BPX3M	X Axis Beam Path Bellow (Right)	
3	0139852	RBT182/10BPY	Y Axis Beam & Beam Path Bellow (Front & Rear)	
6	0139853	RBT184/10URX3M	U Axis Rail Bellow (Left & Right)	
4	0139854	RBT185/10RX3M	X Axis Rail Bellow (Left)	
-	0139855	RBT186/10RX3M	X Axis Rail Bellow (Right) - <i>Available soon</i>	
5	0140160	RBT187/10RY	Y Axis Rail Bellow (Front & Rear)	
2	0140805	RBT183/10BPZ	Z Axis Beam Path Bellow	



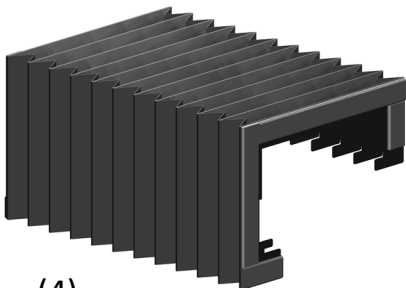
(1)



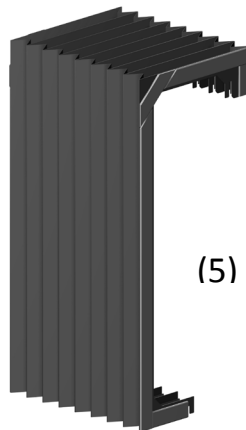
(2)



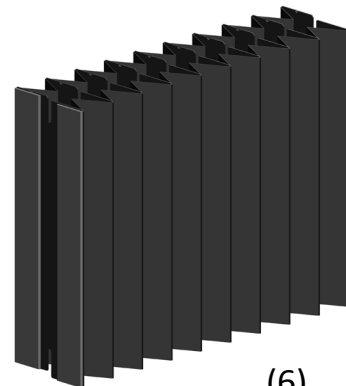
(3)



(4)



(5)



(6)

Richardson Electronics | www.rellaser.com | laser@rell.com | See Last Page For Local Sales Offices

All product and company names are trademarks™ or registered® trademarks of their respective holders. Use of the trademarks is solely for identification purposes, and does not imply any affiliation with or endorsement by the trademark holders..

Bellows

L2530 & Trulaser 2525 Bellows

Outline No.	Trumpf No.	Order No.	DESCRIPTION	Price
5	0135399	RBT162/25RY	Y Axis Rail Bellow (Right & Left)	Call
4	0135401	RBT161/25RX	X Axis Rail Bellow (Rear)	
-	0135402	RBT160/25RX	X Axis Rail Bellow (Front)	
11	0352335	RBT331/2525BY	Y Axis Beam Bellow for the Trulaser 2525	
11	0352336	RBT330/2525BPY	Y Axis Beam Path Bellow for the Trulaser 2525	
3	0354501	RBT165/25BPY	Y Axis Beam Path Bellow (Rear)	
2	0910354	RBT102/30BPZ	Z Axis Beam Path Bellow	
3	0925802	RBT166/25BY	Y Beam Bellow (Front)	
3	0925803	RBT163/25BX	X Axis Beam Bellow (Right)	
6	0939012	RBT167/25BPY	Y Axis Beam Path Bellow (Middle)	
3	0939013	RBT164/25BPX	X Axis Beam Path Bellow (Left)	
3	0939014	RBT165/25BPY	Y Axis Beam Path Bellow (Rear)	
-	0980133	RBT168/25RY **	Y Axis Rail Bellow (Right & Left)	
11	2334585	RBT331/2525BY	Y Axis Beam Bellow for the Trulaser 2525	
11	2334809	RBT330/2525BPY	Y Axis Beam Path Bellow for the Trulaser 2525	

Did you know that delaying the replacement of your worn, hole filled, beam & beam path bellows can increase your monthly usage (and cost) of the nitrogen used in the beam purge? **It pays to replace your worn bellows!**

L3030 & Trulaser 3030 Bellows

Outline No.	Trumpf No.	Order No.	DESCRIPTION	Price
9	0124393	RBT105L/30BX	X Axis Beam Bellow (Front) - IMPROVED DESIGN	Call
10	0124394	RBT106L/30BY	Y Axis Beam Bellow (Right) - IMPROVED DESIGN	
8	0141394	RBT101/30RX	Y Axis Rail Bellow (each)	
9	0908032	RBT105L/30BX	X Axis Beam Bellow (Front) - IMPROVED DESIGN	
10	0908033	RBT106L/30BY	Y Axis Beam Bellow (Right) - IMPROVED DESIGN	
2	0910354	RBT102/30BPZ	Z Axis Beam Path Bellow	
9	0920715	RBT105L/30BX	X Axis Beam Bellow (Front) - IMPROVED DESIGN	
10	0920716	RBT106L/30BY	Y Axis Beam Bellow (Right) - IMPROVED DESIGN	
7	0921742	RBT100/30RX	X Axis Rail Bellow (each)	
9	0939015	RBT103L/30BPX*	X Axis Beam Path Bellow (Rear) - IMPROVED DESIGN	
10	0939016	RBT104L/30BPY*	Y Axis Beam Path Bellow (Left) - IMPROVED DESIGN	
10	1306466	RBT104L/30BPY*#	Y Axis Beam Path Bellow (Left) - IMPROVED DESIGN	
10	1306467	RBT106L/30BY #	Y Axis Beam Bellow (Right) - IMPROVED DESIGN	
9	1306468	RBT103L/30BPX*#	X Axis Beam Path Bellow (Rear) - IMPROVED DESIGN	
9	1306469	RBT105L/30BX #	X Axis Beam Bellow (Front) - IMPROVED DESIGN	
9	1667790	RBT105L/30BX	X Axis Beam Bellow (Front) - IMPROVED DESIGN	
10	1667801	RBT106L/30BY	Y Axis Beam Bellow (Right) - IMPROVED DESIGN	
9	1667803	RBT103L/30BPX*	X Axis Beam Path Bellow (Rear) - IMPROVED DESIGN	
10	1667805	RBT104L/30BPY*	Y Axis Beam Path Bellow (Left) - IMPROVED DESIGN	

See page 23 & 24 for outline identification. Please check our website @ www.rellaser.com/trumpf-bellows for bellows datasheets

*If your laser has the long beam clipper (typically found on machines built prior to 2000) it will need to be changed to the newer shorter version before using this replacement bellow.

** Used on older L2530's, while newer lasers use the RBT162/25RY – double check your machines manual, or product ID label on your worn bellow before ordering.

The following bellows are used in older model 3030 machines (not L3030 (L20)'s) that originally had square beam bellows and have either been retrofitted to disk bellows or have been built with disk bellows in newer models. Our square bellows have the same attachment to the frame as both the square and disk bellows and being made of polyurethane with rounded corners, share the benefits of the disk bellows.

Richardson Electronics | www.rellaser.com | laser@rell.com | See Last Page For Local Sales Offices

All product and company names are trademarks™ or registered® trademarks of their respective holders. Use of the trademarks is solely for identification purposes, and does not imply any affiliation with or endorsement by the trademark holders..

Bellows

L4030 & Trulaser 3040 Bellows				
Outline No.	Trumpf No.	Order No.	DESCRIPTION	Price
8	0144949	RBT108/40RY	Y Axis Rail Bellow (each)	Call
1	0342573	RBT110/40BPX*	X Axis Beam Path Bellow (Rear)	
2	0910354	RBT102/30BPZ	Z Axis Beam Path Bellow	
1	0920718	RBT112/40BX*	X Axis Beam Bellow (Front)	
3	0920719	RBT113/40BY	Y Axis Beam Bellow (Right)	
7	0921870	RBT107/40RX	X Axis Rail Bellow (each)	
3	0938000	RBT111/40BPY	Y Axis Beam Path Bellow (Left)	
1	0939017	RBT110/40BPX*	X Axis Beam Path Bellow (Rear)	
1	0975011	RBT112/40BX*	X Axis Beam Bellow (Front)	
1	0976624	RBT112/40BX*	X Axis Beam Bellow (Front)	
-	1504308	RBT280/34RBPY	Y Axis Beam Path/Rail Combo Round Bellow (Left)	
-	1559318	RBT280/34RBPY	Y Axis Beam Path/Rail Combo Round Bellow (Left)	
-	1559392	RBT342/4030L32RBY	Y Axis Beam/Rail Combo Round Bellow (Right)	
-	1570975	RBT340/4030L32RRX	X Axis Rail Bellow (Right)	
-	1570976	RBT341/4030L32LRB	X Axis Rail Bellow (Left)	
-	1865321	RBT340/4030L32RRX	X Axis Rail Bellow (Right)	
-	2012183	RBT341/4030L32LRB	X Axis Rail Bellow (Left)	
3	2335130	RBT113/40BY	Y Axis Beam Bellow (Right)	
1	2335182	RBT110/40BPX*	X Axis Beam Path Bellow (Rear)	
3	2335183	RBT111/40BPY	Y Axis Beam Path Bellow (Left)	
1	2335292	RBT112/40BX*	X Axis Beam Bellow (Front)	
7	1883139	RBT107/40RX	X Axis Rail Bellow (each)	

See the following pages for outline identification. Please check our website @ www.rellaser.com/trumpf-bellows for bellows datasheets

*If your laser has the long beam clipper (typically found on machines built prior to 2000) it will need to be changed to the newer shorter version before using this replacement bellow.



**ANYTIME,
ANYWHERE**

Introducing the new **rellaser.com**

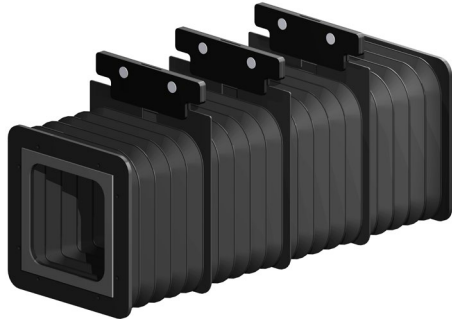
ONLINE CHAT NOW
AVAILABLE >

 Chat with us

Richardson Electronics | www.rellaser.com | laser@rell.com | See Last Page For Local Sales Offices

All product and company names are trademarks™ or registered® trademarks of their respective holders. Use of the trademarks is solely for identification purposes, and does not imply any affiliation with or endorsement by the trademark holders..

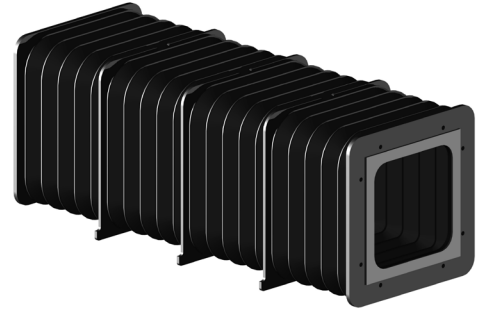
L2530, L3030, L4030, Trulaser 2525, Trulaser 3030 & Trulaser 3040 Bellow Outlines



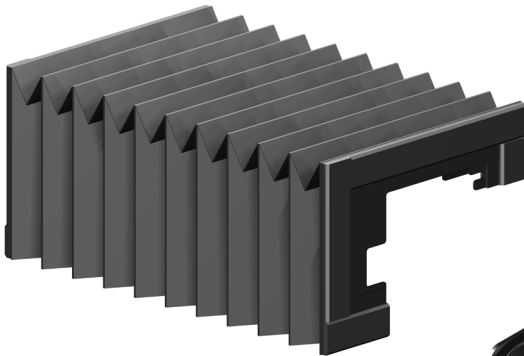
(1)



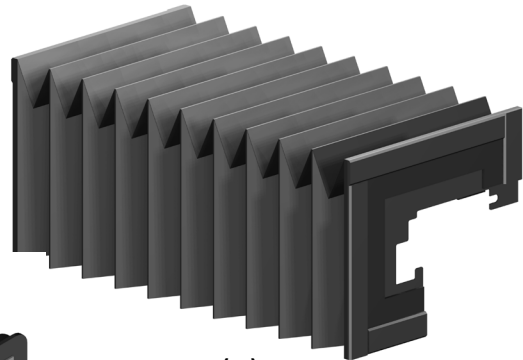
(2)



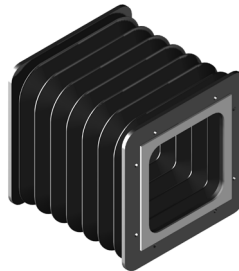
(3)



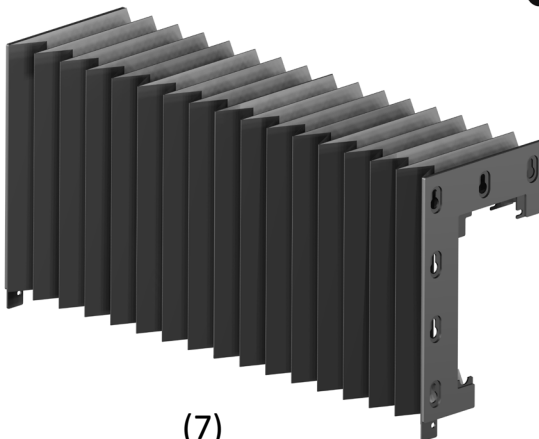
(4)



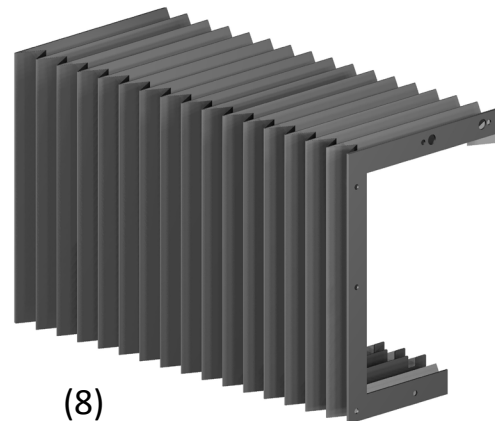
(5)



(6)



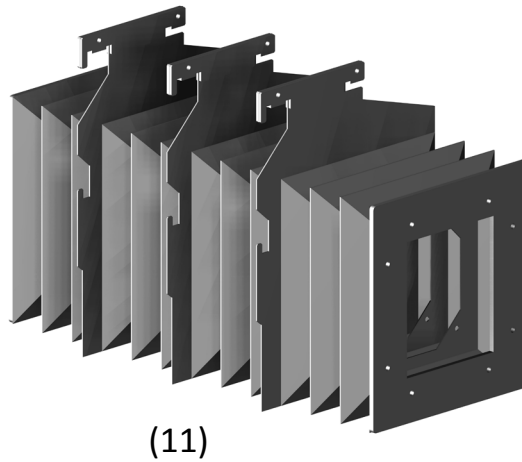
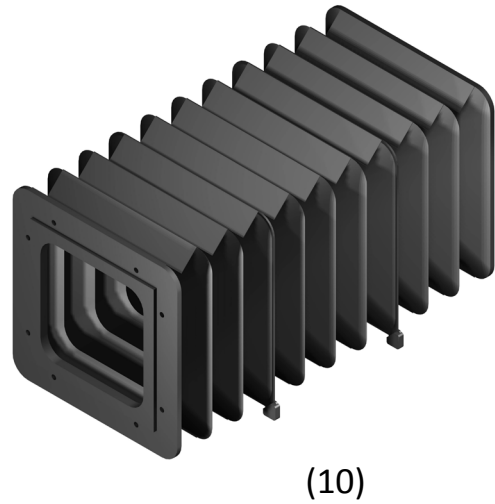
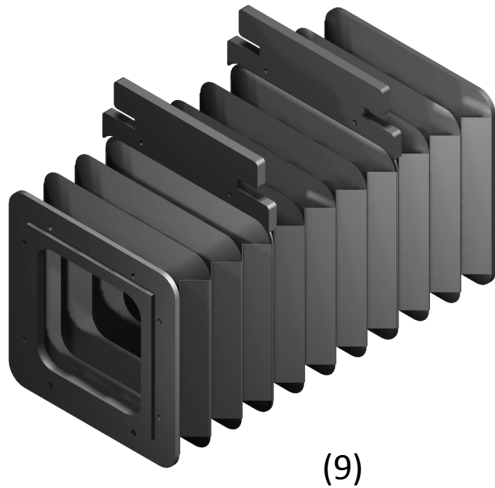
(7)



(8)

Continued...

Bellows



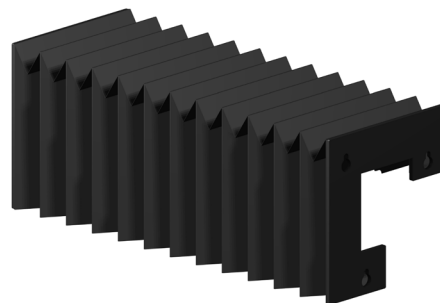
Bellows

L3030 (L20)				
Outline No.	Trumpf No.	Order No.	DESCRIPTION	Price
5	1458860	RBT119/30L20BX	X Axis Beam Bellow (Round) (Front)	Call
5	1458861	RBT118/30L20BPX	X Axis Beam Path Bellow (Round) (Rear)	
1	1458866	RBT116/30RRX	X Axis Rail Bellow (Right)	
2	1458867	RBT117/30LRX	X Axis Rail Bellow (Left)	
4	1496435	RBT121/30L20RBY	Y Beam/Rail Combo Bellow (Round) (Right)	
3	1496436	RBT120/30L20RBPY	Y Beam Path/Rail Combo Bellow (Round) (Left)	
*	1561554	RBT122/30L20CZ	Z Axis Chest Bellow	
4	1802766	RBT121/30L20RBY	Y Beam/Rail Combo Bellow (Round) (Right)	
5	1854032	RBT118/30L20BPX	X Axis Beam Path Bellow (Round) (Rear)	
1	1865268	RBT116/30RRX	X Axis Rail Bellow (Right)	
2	1865269	RBT117/30LRX	X Axis Rail Bellow (Left)	

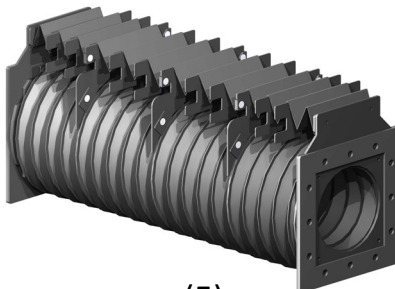
* Under development



(1)



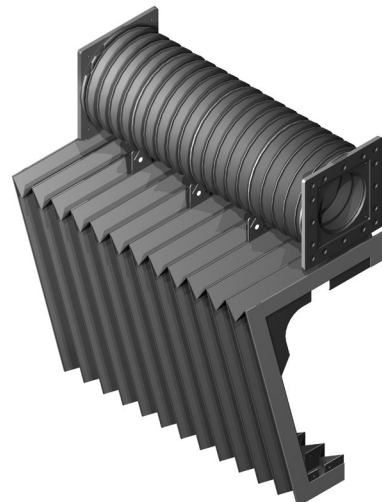
(2)



(5)



(3)



(4)

Richardson Electronics | www.rellaser.com | laser@rell.com | See Last Page For Local Sales Offices

All product and company names are trademarks™ or registered® trademarks of their respective holders. Use of the trademarks is solely for identification purposes, and does not imply any affiliation with or endorsement by the trademark holders..

Bellows

L3050 Bellows (Prior to Mid-2005)

Outline No.	Trumpf No.	Order No.	DESCRIPTION	Price
2	0910354	RBT102/30BPZ	Z Axis Beam Path Bellow	Call
5	0978079	RBT138/50UXBP	U & X Axis Beam Path Bellow	
10	0981710	RBT136/50RX	X Axis Rail Bellow (Right/Front & Rear)	
7	0981753	RBT133/50RU	U Axis Rail Bellow (Front & Rear)	
9	0981756	RBT135/50RX	X Axis Rail Bellow (Left/Rear)	
9	0981757	RBT131/50RX	X Axis Rail Bellow (Left/Front & Middle)	
3	0986703	RBT132/50RBY	Y Axis Beam/Rail Combo Bellow (Left)	
6	0993338	RBT137/50RY	Y Axis Rail Bellow (Right)	
3	1226192	RBT132/50RBY	Y Axis Beam/Rail Combo Bellow (Left)	
6	1226193	RBT137/50RY	Y Axis Rail Bellow (Right)	
9	1302018	RBT135/50RX	X Axis Rail Bellow (Left/Rear)	
9	1302020	RBT131/50RX	X Axis Rail Bellow (Left/Front & Middle)	
7	1302386	RBT133/50RU	U Axis Rail Bellow (Front & Rear)	
9	1596087	RBT131/50RX	X Axis Rail Bellow (Left/Front & Middle)	
9	1596088	RBT135/50RX	X Axis Rail Bellow (Left/Rear)	
9	1873857	RBT135/50RX	X Axis Rail Bellow (Left/Rear)	

L3050 Bellows (Mid-2005 & After) & Trulaser 5030

Outline No.	Trumpf No.	Order No.	DESCRIPTION	Price
2	0910354	RBT102/30BPZ	Z Axis Beam Path Bellow	Call
6	1226193	RBT137/50RY	Y Axis Rail Bellow (Right)	
4	1271514	RBT134/50UXBP	U & X Axis Round Beam Path Bellow	
9	1302018	RBT135/50RX	X Axis Rail Bellow (Left/Rear)	
9	1302020	RBT131/50RX	X Axis Rail Bellow (Left/Front & Middle)	
7	1302386	RBT133/50RU	U Axis Rail Bellow (Front & Rear)	
8	1307207	RBT130/50RX	X Axis Rail Bellow (Right/Front & Rear)	
1	1353514	RBT139/50RBY	Y Axis Round Beam/Rail Combo Bellow (Left)	
-	1353515	RBT239/50RBY	Y Axis Round Beam/Rail Combo Bellow (Left)	
8	1596086	RBT130/50RX	X Axis Rail Bellow (Right)	
9	1596087	RBT131/50RX	X Axis Rail Bellow (Left/Front & Middle)	
9	1596088	RBT135/50RX	X Axis Rail Bellow (Left/Rear)	
8	1873855	RBT130/50RX	X Axis Rail Bellow (Right/Front & Rear)	

See the following page for outline identification. Please check our website @ www.rellaser.com/trumpf-bellows for bellows datasheets



**ANYTIME,
ANYWHERE**

Introducing the new **rellaser.com**

ONLINE CHAT NOW
AVAILABLE >

Chat with us

Richardson Electronics | www.rellaser.com | laser@rell.com | See Last Page For Local Sales Offices

All product and company names are trademarks™ or registered® trademarks of their respective holders. Use of the trademarks is solely for identification purposes, and does not imply any affiliation with or endorsement by the trademark holders..

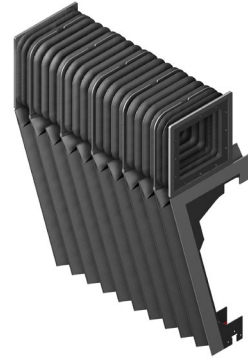
L3050 Bellow Outlines



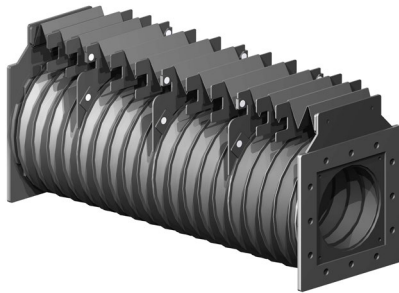
(1)



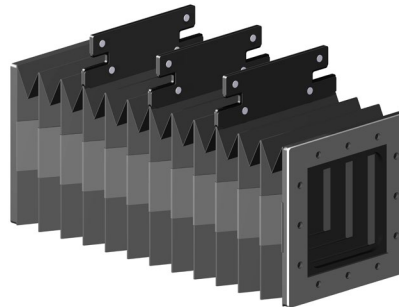
(2)



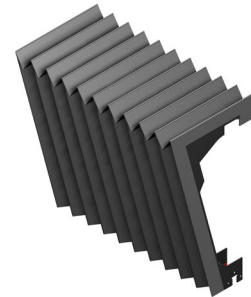
(3)



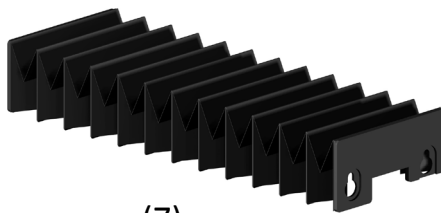
(4)



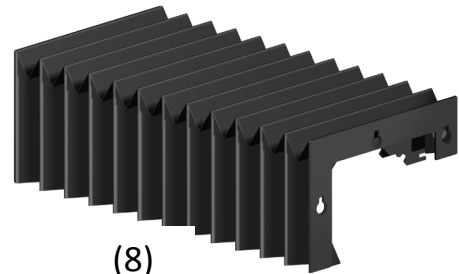
(5)



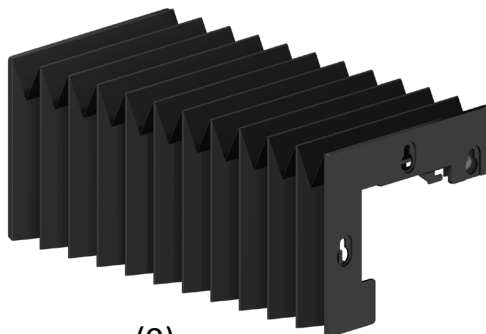
(6)



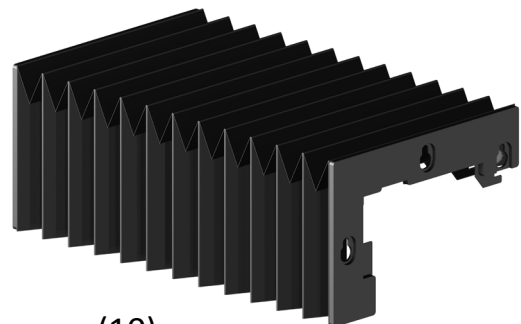
(7)



(8)



(9)



(10)

Bellows

L3530 Bellows

Outline No.	Trumpf No.	Order No.	DESCRIPTION	Price
1	1667790	RBT105L/30BX	X Axis Beam Bellow (Front) - IMPROVED DESIGN	Call
1	1667803	RBT103L/30BPX	X Axis Beam Path Bellow (Rear) - IMPROVED DESIGN	
4	0362270	RBT250/353BPY	Y Axis Beam Path Bellow (Left)	
10	0362271	RBT251/353BY	Y Axis Beam Bellow (Right)	
9	0362272	RBT252/353BPX2	X Axis Beam Bellow (Front)	
8	0362273	RBT253/353BX2	X Axis Beam Path Bellow (Rear)	
2	0910354	RBT102/30BPZ	Z Axis Beam Path Bellow	

See the following page for outline identification. Please check our website @ www.rellaser.com/trumpf-bellows for bellows datasheets

L4050 Bellows & Trulaser 5040

Outline No.	Trumpf No.	Order No.	DESCRIPTION	Price
2	0910354	RBT102/30BPZ	Z Axis Beam Path Bellow	Call
3	1222110	RBT200/45RBPY	Y Axis Beam Path/Rail Combo Bellow	
6	1222111	RBT201/45RY	Y Axis Rail Bellow	
5	1222528	RBT207/45RU	U Axis Rail Bellow	
7	1222529	RBT205/45RXLF *	X Axis Rail Bellow (Left Middle & Front)	
7	1222571	RBT206/45RXLB *	X Axis Rail Bellow (Left/Rear)	
7	1222573	RBT204/45RXR	X Axis Rail Bellow (Right Front & Rear)	
11	1222575	RBT203L/45BPU	U Axis Beam Path Bellow - IMPROVED DESIGN	
1	1222576	RBT202L/45BPX	X Axis Beam Path Bellow - IMPROVED DESIGN	

*Please confirm the open & closed lengths of your machine, as some Trumpf manuals call out the bellows incorrectly.

See the following page for outline identification. Please check our website @ www.rellaser.com/trumpf-bellows for bellows datasheets



**ANYTIME,
ANYWHERE**

Introducing the new **rellaser.com**

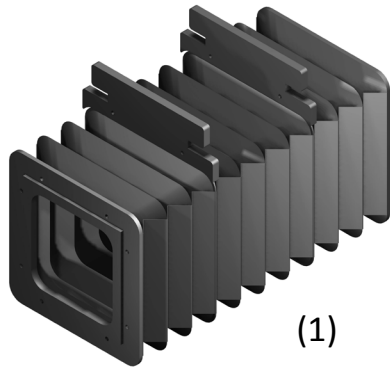
ONLINE CHAT NOW
AVAILABLE >

Chat with us

Richardson Electronics | www.rellaser.com | laser@rell.com | See Last Page For Local Sales Offices

All product and company names are trademarks™ or registered® trademarks of their respective holders. Use of the trademarks is solely for identification purposes, and does not imply any affiliation with or endorsement by the trademark holders..

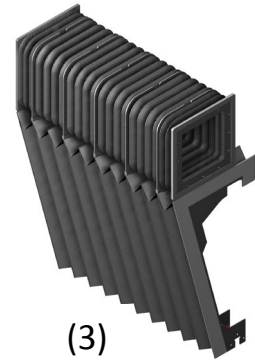
Bellows



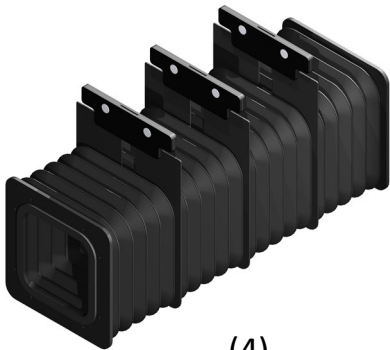
(1)



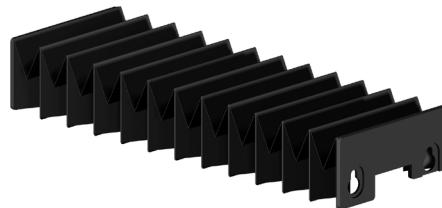
(2)



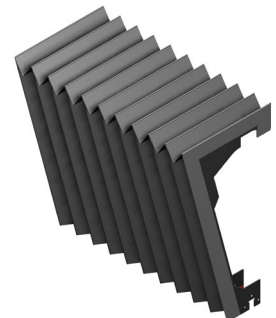
(3)



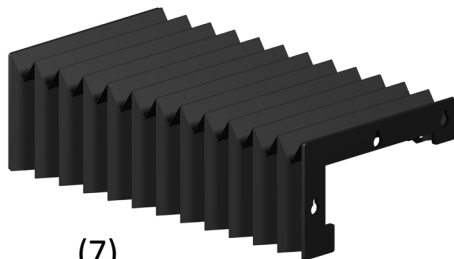
(4)



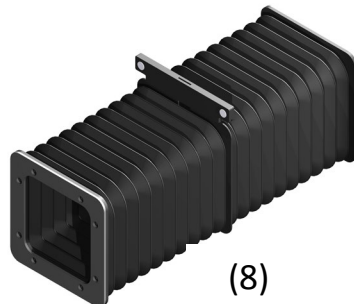
(5)



(6)



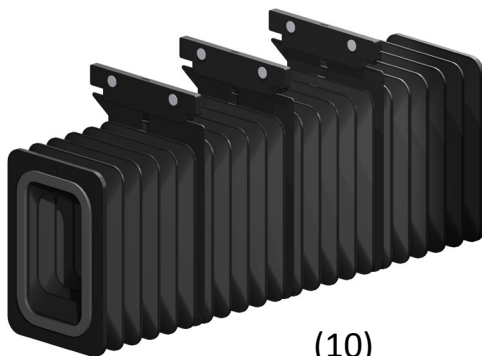
(7)



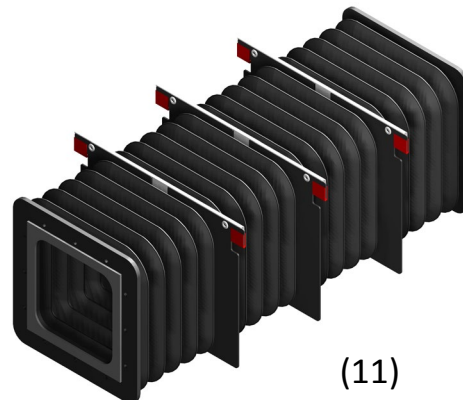
(8)



(9)



(10)



(11)

Richardson Electronics | www.rellaser.com | laser@rell.com | See Last Page For Local Sales Offices

All product and company names are trademarks™ or registered® trademarks of their respective holders. Use of the trademarks is solely for identification purposes, and does not imply any affiliation with or endorsement by the trademark holders..

Bellows

L6030 Bellows

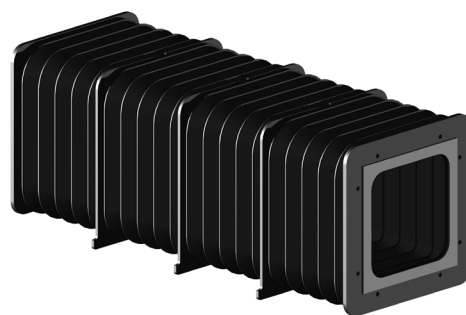
Outline No.	Trumpf No.	Order No.	DESCRIPTION	Price
5	0144949	RBT108/40RY	Y Axis Rail Bellow	Call
2	0910354	RBT102/30BPZ	Z Axis Beam Path Bellow	
3	0920719	RBT113/40BY	Y Axis Beam Bellow (Right)	
1	0920730	RBT141/60BX	X Axis Beam Bellow (Front)	
4	0921871	RBT140/60RX	X Axis Rail Bellow	
1	0937999	RBT142/60BPX	X Axis Beam Path Bellow (Rear)	
3	0938000	RBT111/40BPY	Y Axis Beam Path Bellow (Left)	



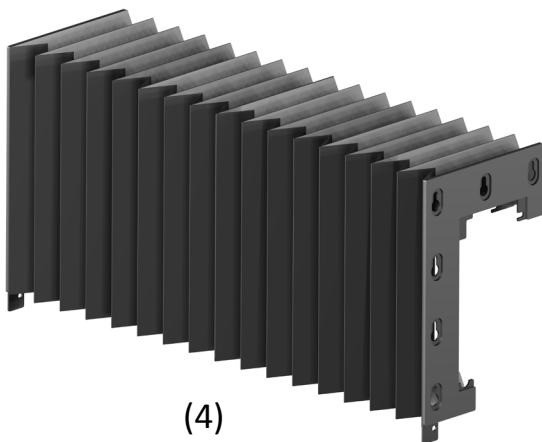
(1)



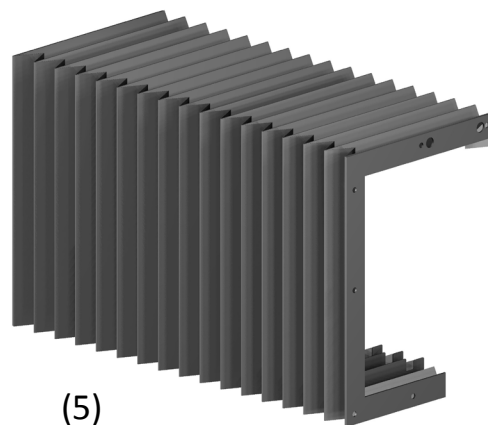
(2)



(3)



(4)



(5)

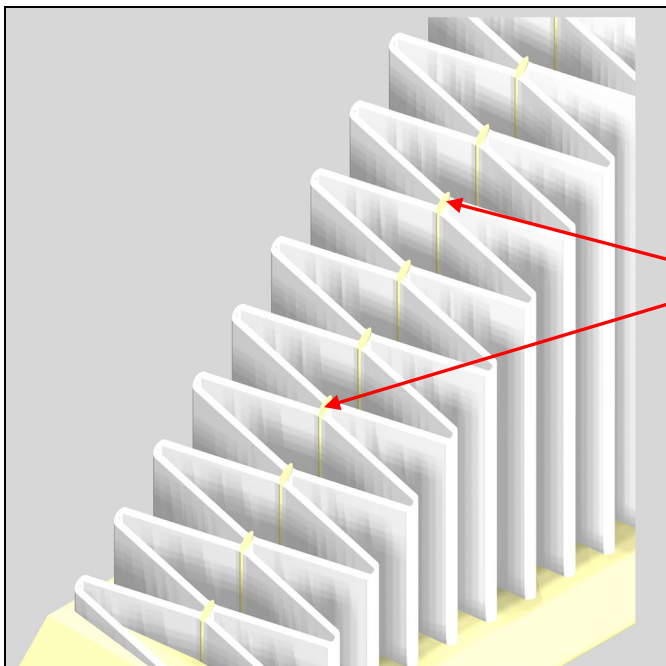
Dust Collection Filters



Richardson Electronics is one of the largest aftermarket suppliers of highest quality German-made filters. High quality filtration is directly related to the health and safety of your technicians and staff, it is important that they be replaced as needed to ensure maximum efficiency and a healthy work environment.

Key features and benefits of Richardson Electronics Dusto Collection Filters:

- ✓ Designed to fit most Handte®, Camfil®, Keller® and Herding® dust extractors, found on most Trumpf CO₂ & Fiber lasers
- ✓ Constructed using tip-to-tip gluing, providing longer life
- ✓ Filtration rating of up to 99.995% suitable to filter the finest laser grade dust
- ✓ Meet OEM quality standards
- ✓ Made in Germany by experts with more than 30 years' of experience in filtration technology
- ✓ Competitively priced



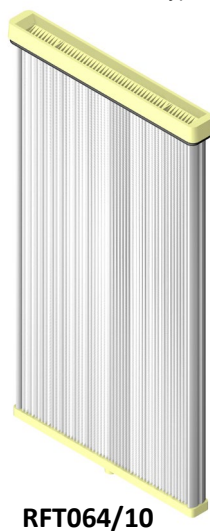
Tip to Tip Construction, for maximum strength, providing longer life

Dust Collection Filters

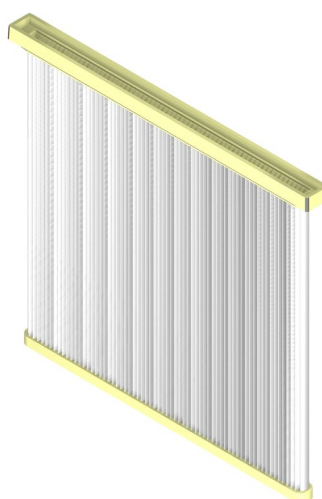
Trumpf No.	Order No.	DESCRIPTION	Price
0139809	RFT809/600	For Handte systems MF-B-17/8/1	Call
0141759	RFT759/10	For Keller Vario T1.0 systems (L2530)	
0146122	RFT122/10A*	For KellerVario T1.5 (L2530, L3030, L4030, L6030 & TLC1005)	
0148491	RFT809/600	For Handte systems MF-B-17/8/1	
0340484	RFT484/125	For Keller Vario T2.5 & T3.0 systems	
0342682	RFT122/10A*	For KellerVario T1.5 (L2530, L3030, L4030, L6030 & TLC1005)	
0342812	RFT122/10A*	For KellerVario T1.5 (L2530, L3030, L4030, L6030 & TLC1005)	
0344014	RFT064/10	For Handte systems MF-L-30/6/1, MF-L-40/8/1 & MF-L-50/10/1	
0345064	RFT064/10	For Handte systems MF-L-30/6/1, MF-L-40/8/1 & MF-L-50/10/1	
0346113	RFT064/10	For Handte systems MF-L-30/6/1, MF-L-40/8/1 & MF-L-50/10/1	
0346118	RFT064/10	For Handte systems MF-L-30/6/1, MF-L-40/8/1 & MF-L-50/10/1	
0346118	RFT064/10	For Handte systems MF-L-30/6/1, MF-L-40/8/1 & MF-L-50/10/1	
0359584	RFT064/10	For Handte systems MF-L-30/6/1, MF-L-40/8/1 & MF-L-50/10/1	
0359585	RFT064/10	For Handte systems MF-L-30/6/1, MF-L-40/8/1 & MF-L-50/10/1	
0359586	RFT064/10	For Handte systems MF-L-30/6/1, MF-L-40/8/1 & MF-L-50/10/1	
0380757	RFT757/10	For Handte systems MF-L-2000, MF-L-2500 & MF-L-3000	
0384514	RFT275/600	For Handte MF17/8/1-L20/20 (L1030)	
0386275	RFT275/600	For Handte MF17/8/1-L20/20 (L1030)	
1533834	RFT064/10	For Handte systems MF-L-30/6/1, MF-L-40/8/1 & MF-L-50/10/1	
1577250	RFT757/10	For Handte systems MF-L-2000, MF-L-2500 & MF-L-3000	
1938301	RFT757/10	For Handte systems MF-L-2000, MF-L-2500 & MF-L-3000	
2019123	RFT600/1200	For use in Herding Delta 1200 systems and TRUMPF 7040 Lasers	
2042139	RFT757/10	For Handte systems MF-L-2000, MF-L-2500 & MF-L-3000	
2050706	RFT691/1100	For Camfil systems MF-8.4, MF-8.5 & MF-8.6 (Europe Only)	
2050706	RFT691/1100A	For Camfil systems MF-8.4, MF-8.5 & MF-8.6 (North America Only)	
2061618	RFT691/1100	For Camfil systems MF-8.4, MF-8.5 & MF-8.6 (Europe Only)	
2061618	RFT691/1100A	For Camfil systems MF-8.4, MF-8.5 & MF-8.6 (North America Only)	
2260691	RFT691/1100	For Camfil systems MF-8.4, MF-8.5 & MF-8.6 (Europe Only)	
2260691	RFT691/1100A	For Camfil systems MF-8.4, MF-8.5 & MF-8.6 (North America Only)	
2625632	RFT064/10	For Handte systems MF-L-30/6/1, MF-L-40/8/1 & MF-L-50/10/1	
59113119	RFT757/10	For Handte systems MF-L-2000, MF-L-2500 & MF-L-3000	

* New pleated design that provides greater filtration, when compared to the old style SINBRAN® membrane material.

NEW items shown in **BOLD** type



RFT064/10



RFT122/10A



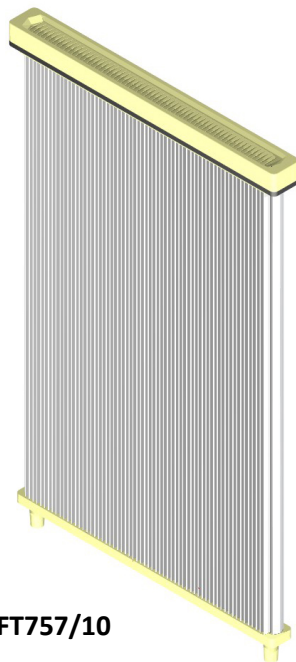
RFT759/10

Richardson Electronics | www.rellaser.com | laser@rell.com | See Last Page For Local Sales Offices

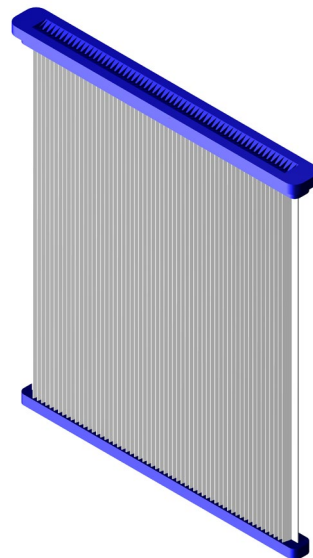
All product and company names are trademarks™ or registered® trademarks of their respective holders. Use of the trademarks is solely for identification purposes, and does not imply any affiliation with or endorsement by the trademark holders..

Dust Collection Filters

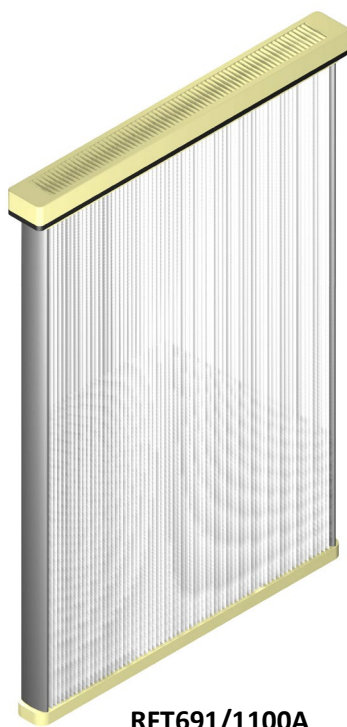
Did you know that cleaning and replacing filters as needed ensures your dust collection system is operating at peak efficiency and thereby keeping your staff safe from the harmful dust generated during the cutting process? **Have you replaced your filters**



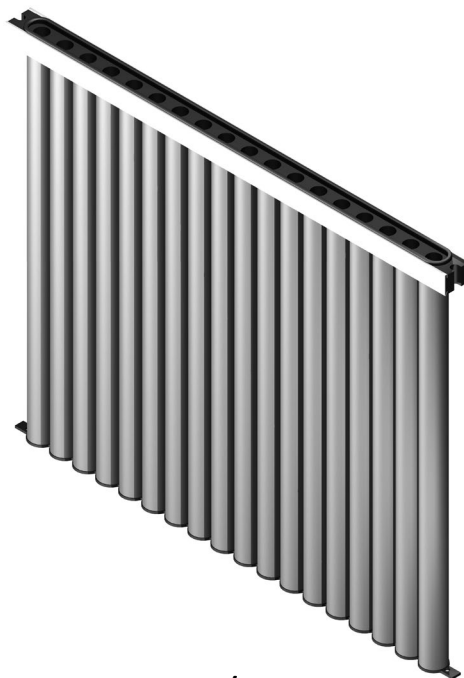
RFT757/10



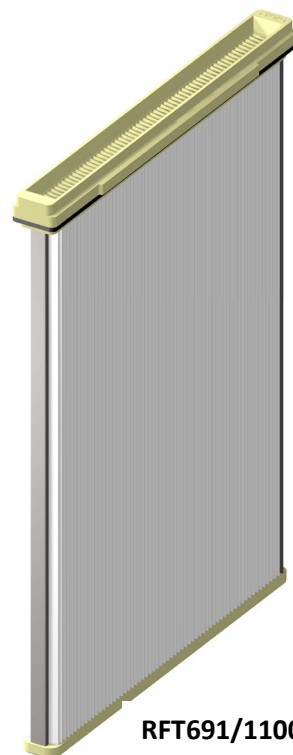
RFT809/600



RFT691/1100A



RFT484/125



RFT691/1100

Richardson Electronics | www.rellaser.com | laser@rell.com | See Last Page For Local Sales Offices

All product and company names are trademarks™ or registered® trademarks of their respective holders. Use of the trademarks is solely for identification purposes, and does not imply any affiliation with or endorsement by the trademark holders..

Air Filters, by Donaldson®

Trumpf No.	Order No.	DESCRIPTION	Price
0123674	1C125116	Ultrair FF 03/10 .01µm Silicon Free Fine Filter Element	Call
0123675	1C125716	Ultrair SMF 03/10 .01µm Silicon Free Sub-Micro Filter Element	
0123676	1C125824	Ultrac AK 04/20 Silicon Free Activated Carbon Absorption	
0377006	1C125116	Ultrair FF 03/10 .01µm Silicon Free Fine Filter Element	
0377005	1C125716	Ultrair SMF 03/10 .01µm Silicon Free Sub-Micro Filter Element	
0377004	1C125824	Ultrac AK 04/20 Silicon Free Activated Carbon Absorption	
0147239	1C170032-25	Ultrair PEP 05/20 Silicon Free Air Filter	
0147240	1C125432	Ultrair MFP05/20 Silicon Free Air Filter	
0147241	1C125732	Ultrair SMFP05/20 Silicon Free Air Filter	



Donaldson Air Filters

Water Filter

Trumpf No.	Order No.	DESCRIPTION	Price
0143106	CP102480	Chisso 10 µm Water Filter	Call
0146152	CP102480	Chisso 10 µm Water Filter	
1888631	RFT102/20-50UM	50 µm Water Filter, 20" (508mm) (Used on newer fiber lasers)	

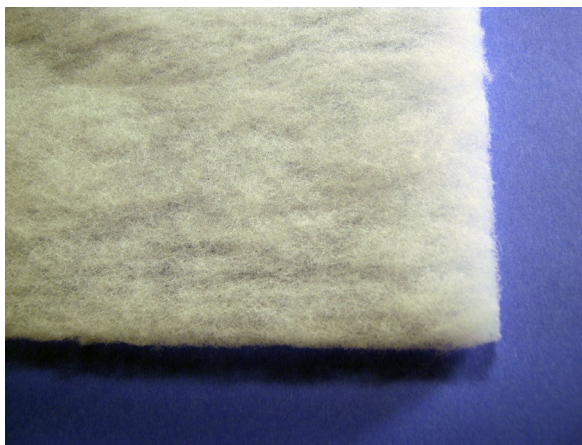


Richardson Electronics | www.rellaser.com | laser@rell.com | See Last Page For Local Sales Offices

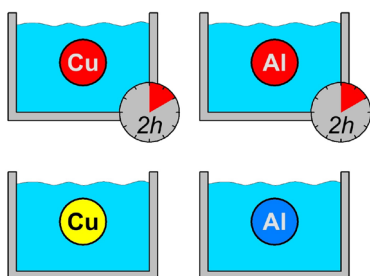
All product and company names are trademarks™ or registered® trademarks of their respective holders. Use of the trademarks is solely for identification purposes, and does not imply any affiliation with or endorsement by the trademark holders..

Chiller Filter Material

Trumpf No.	Order No.	DESCRIPTION	Price
	RFT100/1X20	Sold in rolls - 13mm x 1M x 20M (1/2" x 39.4" x 65.6')	Call
	RFT101/25X65	Sold in rolls - 1/2" x 25" x 65' (13mm x 0.64M x 20M)	



Water Treatment Kits & Accessories



We are now offering the copper (Cu) and aluminum (Al) chiller system water treatment kits used in Trumpf® CO₂ lasers. The kits that we are offering are equivalents to the OEM original kits. Each kit contains the exact portions of biocide and inhibitor for your specific chiller systems. The water treatment kits last for 12 months, keeping your down time to a minimum. Each kit contains a CD with the MSDS information as well as protective gear.

Note: Care should always be taken when handling these, or any other chemicals. The use of safety glasses and protective gloves is strongly recommended.

Europe Kits (For use in Europe ONLY)

Trumpf No.	Order No.	DESCRIPTION	Price
1652091	RWK300/EZAL1EU	Aluminum Water Treatment Kit 1	Call
1652604	RWK310/EZAL2EU	Aluminum Water Treatment Kit 2	
1652605	RWK320/EZAL3EU	Aluminum Water Treatment Kit 3	
1652624	RWK300/EZAL1EU	Aluminum Water Treatment Kit 1	
1652625	RWK300/EZAL1EU	Aluminum Water Treatment Kit 1	
1652630	RWK310/EZAL2EU	Aluminum Water Treatment Kit 2	
1652632	RWK310/EZAL2EU	Aluminum Water Treatment Kit 2	
1652640	RWK320/EZAL3EU	Aluminum Water Treatment Kit 3	
1652943	RWK320/EZAL3EU	Aluminum Water Treatment Kit 3	
1652964	RWK330/EZAL4EU	Aluminum Water Treatment Kit 4	
1652969	RWK330/EZAL4EU	Aluminum Water Treatment Kit 4	
1652981	RWK200/EZCU1-3EU	Copper Water Treatment Kit 1, 2 & 3	
1652993	RWK200/EZCU1-3EU	Copper Water Treatment Kit 1, 2 & 3	
1652994	RWK200/EZCU1-3EU	Copper Water Treatment Kit 1, 2 & 3	
1652995	RWK200/EZCU1-3EU	Copper Water Treatment Kit 1, 2 & 3	
1653090	RWK200/EZCU1-3EU	Copper Water Treatment Kit 1, 2 & 3	
1653107	RWK210/EZCU4EU	Copper Water Treatment Kit 4	
1653111	RWK200/EZCU1-3EU	Copper Water Treatment Kit 1, 2 & 3	
1653112	RWK200/EZCU1-3EU	Copper Water Treatment Kit 1, 2 & 3	
1653119	RWK200/EZCU1-3EU	Copper Water Treatment Kit 1, 2 & 3	
1653120	RWK200/EZCU1-3EU	Copper Water Treatment Kit 1, 2 & 3	
1653122	RWK330/EZAL4EU	Aluminum Water Treatment Kit 4	
1653126	RWK220/EZCU5EU	Copper Water Treatment Kit 5	
1653127	RWK220/EZCU5EU	Copper Water Treatment Kit 5	
1653130	RWK210/EZCU4EU	Copper Water Treatment Kit 4	
1653131	RWK210/EZCU4EU	Copper Water Treatment Kit 4	
1653132	RWK220/EZCU5EU	Copper Water Treatment Kit 5	

For use anywhere except Europe and Japan

Trumpf No.	Order No.	DESCRIPTION	Price
1652091, 1652606, 1652623	RWK623/EZAL1NA	Aluminum Water Treatment Kit 1	Call
1652981, 1652991, 1652992	RWK991/EZCU1NA	Copper Water Treatment Kit 1	
1652607, 1652630, 1652631	RWK631/EZAL2NA	Aluminum Water Treatment Kit 2	
1652995, 1653088, 1653089	RWK088/EZCU2NA	Copper Water Treatment Kit 2	
1652605, 1652608, 1652609	RWK608/EZAL3NA	Aluminum Water Treatment Kit 3	
1653112, 1653113, 1653114	RWK113/EZCU3NA	Copper Water Treatment Kit 3	
1652964, 1652965, 1652968	RWK965/EZAL4NA	Aluminum Water Treatment Kit 4	
1653107, 1653108, 1653109	RWK108/EZCU4NA	Copper Water Treatment Kit 4	
1653124, 1653125, 1653132	RWK124/EZCU5NA	Copper Water Treatment Kit 5	

Be sure to order new Chisso water filters (Trumpf ID No. 0146152 – our P/N CP102480) when you order your water kits!



Keeping the water clean is the #1 maintenance tip you should follow. You want to keep the purity of the water within the manufacturers recommended conductivity levels, measured in micro-Siemens (μ S), to prevent corrosion of the valuable copper and aluminum components in your laser. Measuring the conductivity of your chiller water is quick and easy with the **Hanna HI98311** meter. Simply turn on the meter, insert the probe end into the water and view the reading on the LCD display. It's that simple! The lower the conductivity reading, the better your water quality is!

ABOUT RICHARDSON ELECTRONICS, LTD.

Richardson Electronics | www.rellaser.com | laser@rell.com | See Last Page For Local Sales Offices

All product and company names are trademarks™ or registered® trademarks of their respective holders. Use of the trademarks is solely for identification purposes, and does not imply any affiliation with or endorsement by the trademark holders..

Richardson Electronics, Ltd. is a leading global provider of engineered solutions, power grid and microwave tubes and related consumables, and customized display solutions serving customers in the alternative energy, aviation, broadcast, communications, industrial, marine, medical, military, scientific and semiconductor markets. We bring together a deep understanding of engineering, wide-ranging capabilities and a worldwide network to deliver high quality products such as:

[Capacitors](#) | [Electromechanical](#) | [Electron Tubes & Vacuum Devices](#) | [Electro-optics](#) | [High Energy Transfer Products](#) | [Inductors](#) | [High Power Microwave](#) | [Passive Devices](#) | [CRTs](#) | [LCDs](#) | [Power Amplifiers](#)

More information is available online at www.rell.com

Sales Locations

Location Name	Phone	Fax	Email
NORTH AMERICA			
Corporate Headquarters: La Fox, Illinois	+1 (630) 208 2200 +1 (800) 348 5580	+1 (630) 208 2450 +1 (630) 208 2450	sales@rell.com sales@rell.com
LATIN AMERICA			
São Paulo, Brazil	+55 (11) 5186 9655	+55 (11) 5186 9655	brazil@rell.com
Latin American Headquarters: Ft. Lauderdale	+1 (954) 735 4425	+1 (954) 735 3554	latam@rell.com
Mexico City, Mexico	+52 (55) 5208 9830	+52 (55) 5514-0503 Ext. 108	mexico@rell.com
EUROPE			
Nanterre, France	+33 1 41 32 39 90	+33 1 41 32 39 99	france@rell.com
Meerbusch, Germany	+49 (0)2150 912810	+49 (0)2150 912811	germany@rell.com
Puchheim, Germany	+49 (0)89 8189128 0	+49 (0)89 8189128 10	germany@rell.com
Florence, Italy	+39 (055) 420831	+39 (055) 4210726	italy@rell.com
Milan, Italy	+39 (039) 653 145	+39 (039) 653 835	italy@rell.com
Madrid, Spain	+34 (91) 528 3700	+34 (91) 467 5468	spain@rell.com
Lincoln, UK	+44 1522 548598	+44 1522 524265	uk@rell.com
Hook, UK (Powerlink)	+44 (0) 1256 767550	+44 (0) 1256 767551	Service@powerlink-ltd.com
Hoofddorf, Netherlands	+31 (0) 23 556 0490	+31 (0) 23 556 0491	netherlands@rell.com
Stockholm, Sweden	+33 1 41 32 39 90	+33 1 41 43 39 99	sweden@rell.com
Dubai, UAE (Powerlink)	00 971 65579714		Service@powerlink-ltd.com
ASIA			
Beijing, China	+86 (10) 5925 1276	+86 (10) 5925 1277	china@rell.com
Hong Kong, China	+86 (10) 5925 1276	+86 (10) 5925 1277	hongkong@rell.com
Shanghai, China	+86 21 6209 0286	+86 21 6259 6972	china@rell.com
Shenzhen, China	+86 755 8296 0802	+86 755 8318 7364	china@rell.com
Melbourne, Australia	+61 (03) 9874 8292	+61 (03) 9874 8248	dgl@rell.com
Mumbai, India	+91 22 6181 8326	+91 22 6121 4952	india@rell.com
New Zealand	+61 (03) 9874 8292	+61 (03) 9874 8248	dgl@rell.com
Noida, India	+91 22 6181 8326	+91 22 6121 4952	india@rell.com
Tokyo, Japan	81 3 6380 8441	81 3 6380 8438	japan@rell.com
Seoul, Korea	+82 2 539 4737	+82 2 556 4734	southkorea@rell.com
Singapore, Singapore	+65 6846 9241	+65 6846 1065	singapore@rell.com
Taipei, Taiwan	+886 (2) 2698 1688	+886 (2) 2698 1652	taiwan@rell.com
Bangkok, Thailand	+66 (2) 318 8937	+662 318 8939	thailand@rell.com
Ho Chi Minh City, Vietnam	+60 123 223 096	N/A	vietnam@rell.com

Online Sales Support, click [here](#).

Richardson Electronics | www.rellaser.com | laser@rell.com | See Last Page For Local Sales Offices

All product and company names are trademarks™ or registered® trademarks of their respective holders. Use of the trademarks is solely for identification purposes, and does not imply any affiliation with or endorsement by the trademark holders..